

ADVANCED SOLUTIONS FOR POWER SYSTEM ANALYSIS AND INTELLIGENT ELECTRICITY



energy
THE LIFE FORCE



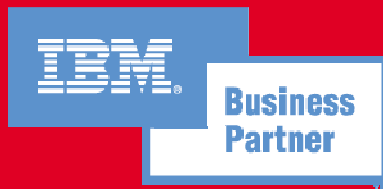
environment
THE LIFE GIVER



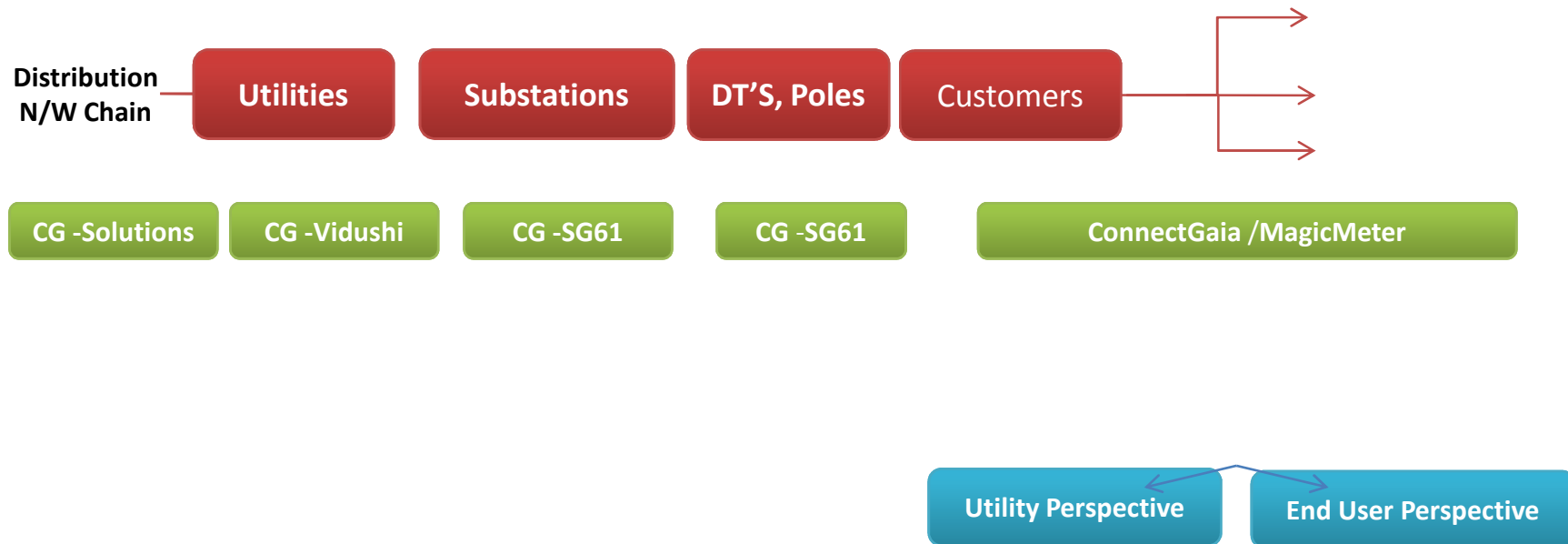
earth
THE LIFE PRESERVER

KLG Systel Limited

- A **knowledge based technology solutions** company with 2 decades of experience
- Provides **IT Enablement for Business Challenges**
- Among NASSCOM's **Top 50 IT Innovators** of 2008
- Ministry of Power empanelled System Integrator, Meter Data Acquisition System Provider and GIS Service Provider
- Bureau of Energy Efficiency empanelled
- Technology **partner with global leaders** such as Autodesk, COADE, IBM, Invensys, Microsoft, Oracle, Primavera, PTC, Landis+Gyr, SAP and Unigraphics
- Over **2000 customers** - multinationals like Nestle, Unilever, Pepsi, British Gas and Indian giants such as Reliance Industries, Tata Steel, NTPC, BHEL, Reliance Energy, Essar and L&T
- Listed on the bourses of the NSE/BSE, India, the Luxembourg Stock Exchange, Europe and the Singapore Stock Exchange



Our Industry Solution Map for the Power Sector

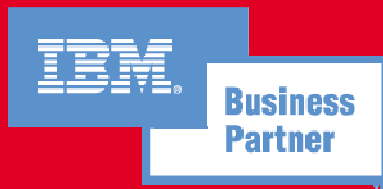


KLG Systel Limited



**POWER SYSTEM ANALYSIS &
SIMULATION - *DlgSILENT***

**INTELLIGENT ELECTRICITY -
connectgaia.com**



klgsystel
A Knowledge Company



DIGSILENT Version 14 Key Features

- Single- and multi-user project data administration environment
- Database with historical data storage and auditing functionality.
- Time-stamped data model
- Management of operational scenarios
- Base lining, versioning and publishing of models
- Integrated node and branch, and switch and component modelling
- Integrated overview diagrams, simplified and detailed single line diagrams
- Fast contingency analysis tools (AC and DC load flow)
- Contingency-constrained economic dispatch including quad booster optimization
- Distributed/embedded power generation modeling
- New models for wind power and virtual power plants

Wednesday, September 05, 2012
05, 2012

klgsystel
A Knowledge Company





DigSILENT Power Factory

Functional Integration and Applications:

- Implemented as a single software solution allowing for fast 'walk around' through the database and execution environment.
- No need to reload modules and update, transfer and convert data and results between different program applications.
- Vertically integrated power equipment model concept allowing models to be shared by all analysis functions.
- Support of **transmission-, distribution- and industrial system design and simulation.**
- Modelling and simulation of **railway systems.**
- Simulation of any kind of **wind turbines and wind parks.**
- **Smart Grid modelling including virtual power plants and distributed generation such as PVpanels, micro turbines, battery storage, CHP, etc.**

Wednesday, September
05, 2012

klgsystel
A Knowledge Company





Multidimensional Capabilities

- Access to user information through a user accounting system
- Protection of data through different types of access rights
- Folder sharing between users with “read-only” access. This is especially useful for libraries and network base cases which should be administrated only by authorized personnel.
- Multi-user data administration supporting MS-SQL or ORACLE databases
- Support of user accounting, access rights and data sharing, featuring the powerful option of allowing several users to work on the same project in a coordinated way.
- Management of multi-user data editing via the definition of a base project, project versions and derived projects (virtual projects).
- Support of version control including rollback functions and merge/compare tools.
- Definition of study cases and operational scenarios

Wednesday, September 05, 2012
05, 2012

klgsystemel
A Knowledge Company





- Data describing network models such as cables, machines, loads, transformers, etc., are subdivided into element data and type data which point to libraries.
- Data are simply entered in physical quantities rather than in per unit values, minimizing the need for manual recalculation and conversion of data.
- Verification of input data, with detailed warning and error messages
- Fully interactive windowing mode according to the latest, proven standards
- Various communication features to exchange data with other applications such as GIS, SCADA and realtime control systems via OPC, shared memory, DGS (CSV, ODBC), etc.
- Hybrid operation switching between background and windowing mode according to users' needs
- Data exchange via CIM, PSS/E, UCTE and many other file formats

Wednesday, September 05, 2012
05, 2012

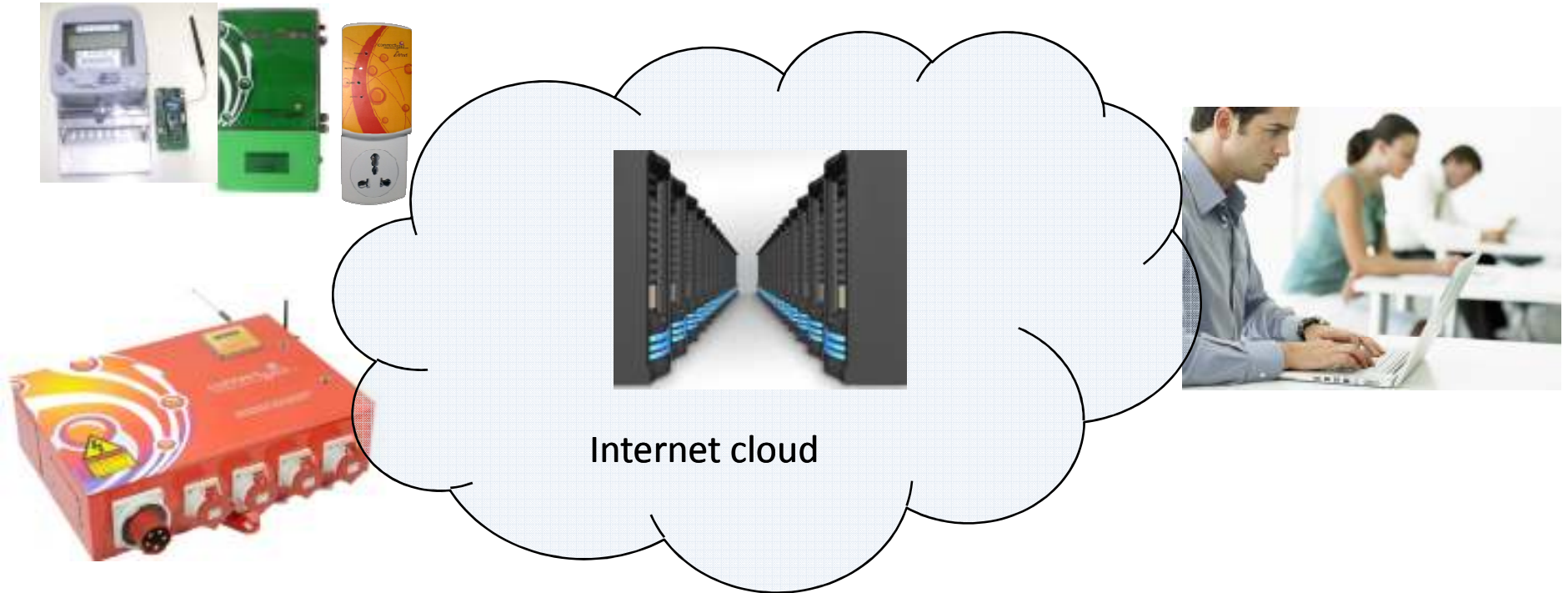




**connectgaia.com – Integrated Hardware, Communication and
Software technology platform!**

connectgaia Energy Management Tools

Integrated H/W & S/W solutions

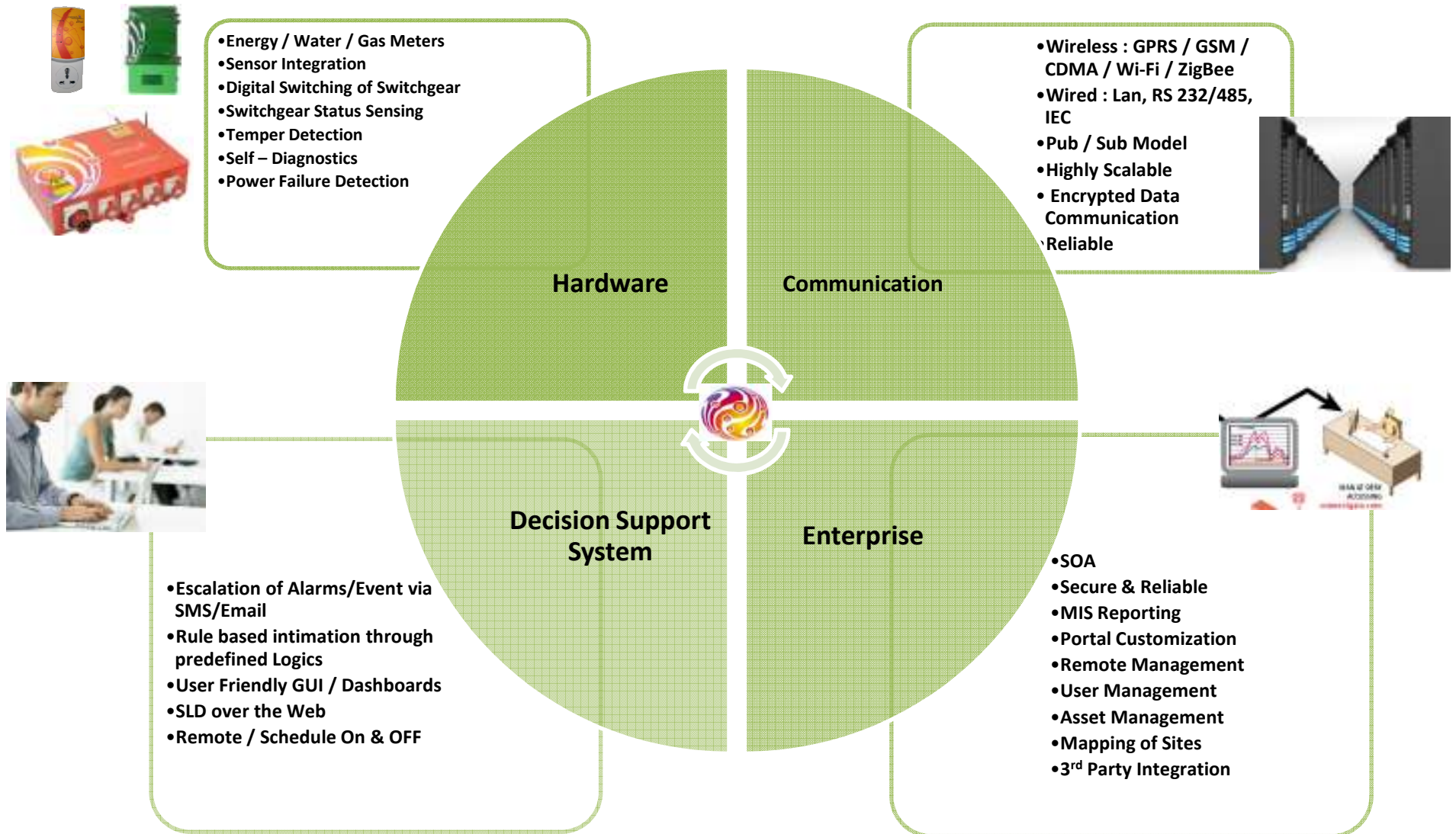


- Low Cost or Free
- Smart IP Devices
- Attached to existing *ANSI / IEC and Proprietary* Meters / Sensors and Actuators

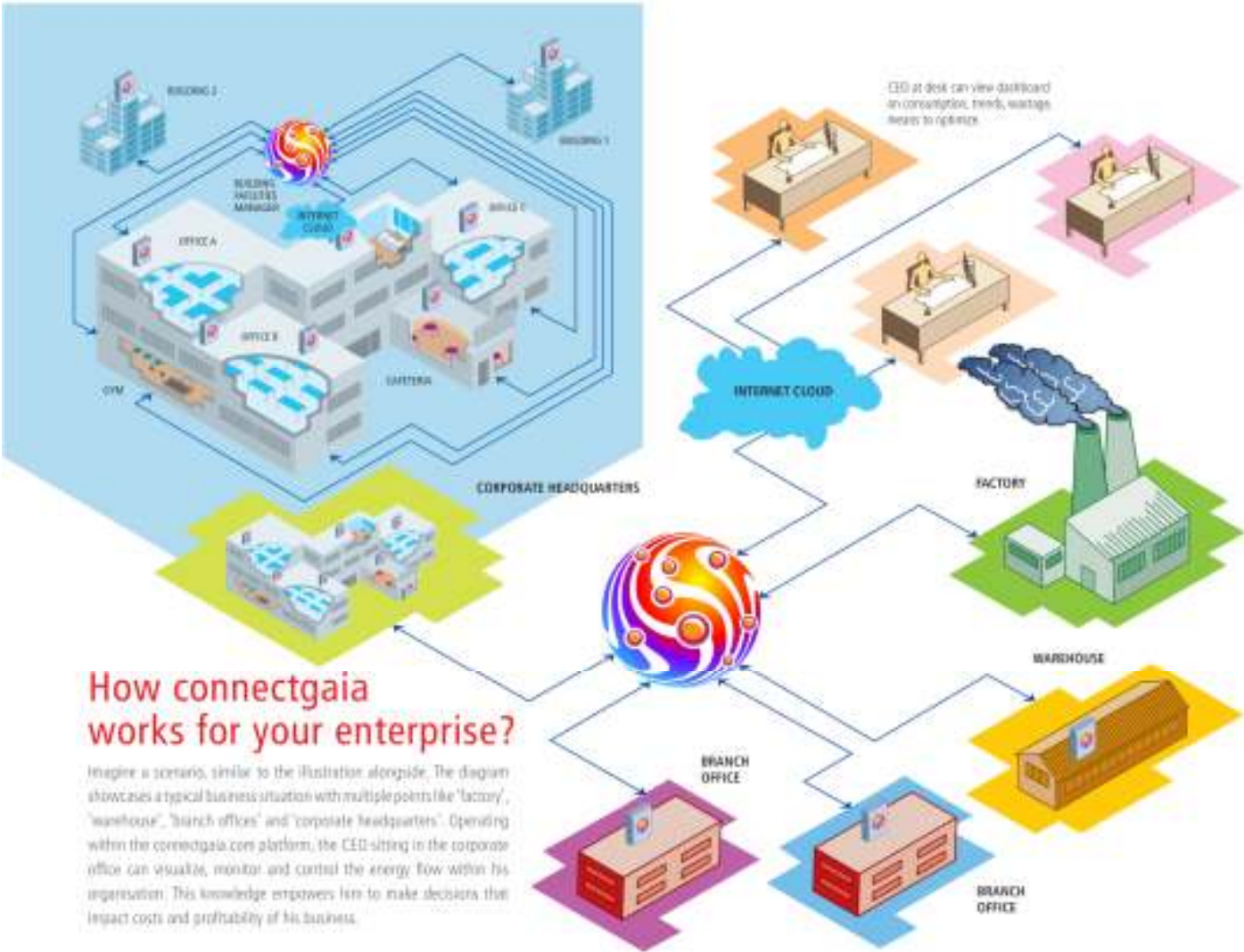
- SOA
- Scalable
- Network Operations Center

- Secure Web based Applications
- Create a Market Place for Collaboration
- Allows Participants to Measure, Visualize, Analyze, Schedule and Control Energy

What is connectgaia?



Multi Location – Enterprise connectgaia Implementation



Connectgaia Technology - Certifications



Connectgaia.com Ready for IBM Energy and Environment



Connectgaia SOA Certification by IBM



Connectgaia System Storage Certification by IBM



Vidushi Certification by IBM



Vidushi – SAP NetWeaver Certification



SAP Preferred Partner for Utilities India



CE Certification for Connectgaia.com

Connectgaia - Rewards & Recognitions



2008 NASSCOM Innovation Awards (Finalist)



Among NASSCOM's 100 IT Innovators Of 2007



2007 CII National Award for Excellence in Energy Management



2007 Golden Peacock Award in the Innovative Product/Service Category



India Power Awards 2008 in Energy Efficiency & DSM



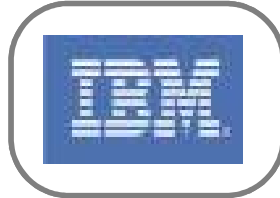
2008 Buildy Awards Finalist



2009 Best Lotus Energy and Environment (Green) Award



2008 IBM Best ISV Award Energy & Utilities Industry Solutions



2008 IBM CTO Innovation Award (Finalist)



IBM Ready for Energy & Environment



Ready for SOA Specialty



System Storage Proven



2009 Logica Global Innovation Venture Partner Award



2007 Asian Wall Street Journal Global Entropolis@Singapore Award (Finalist)



Vidushi on SAP Netweaver Platform



SAP ASUG



IBM Beacon Awards 2009

Thank You!